

# Population projections

## Manawatu District Council

Nick Brunson (Principal Economist, Lead Demographer, & Director)

15<sup>th</sup> April 2026

# Outline

- **Projection approach**
- **Population**
- **Households**
- **Sub-district**

# Population approach

- **Cohort component projection approach**
  - Break population into age groups and consider births, deaths, migration, household formation and labour force participation
- **Migration driven by historic trends and projected labour force shortfalls (economically driven)**
- **Full demographic projection process for district level**
- **Sub-district projections draw on qualitative council knowledge**

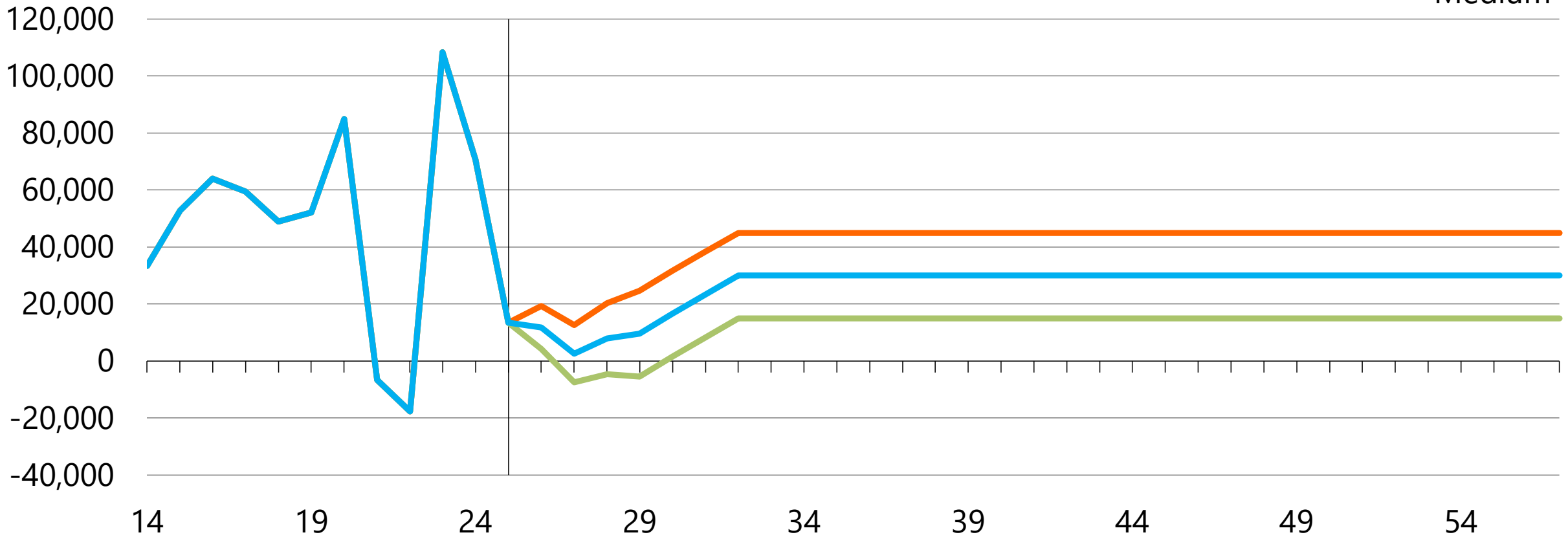
# National population

# National picture

## International net migration to New Zealand

Stats NZ estimates, Infometrics forecast

- High
- Low
- Medium

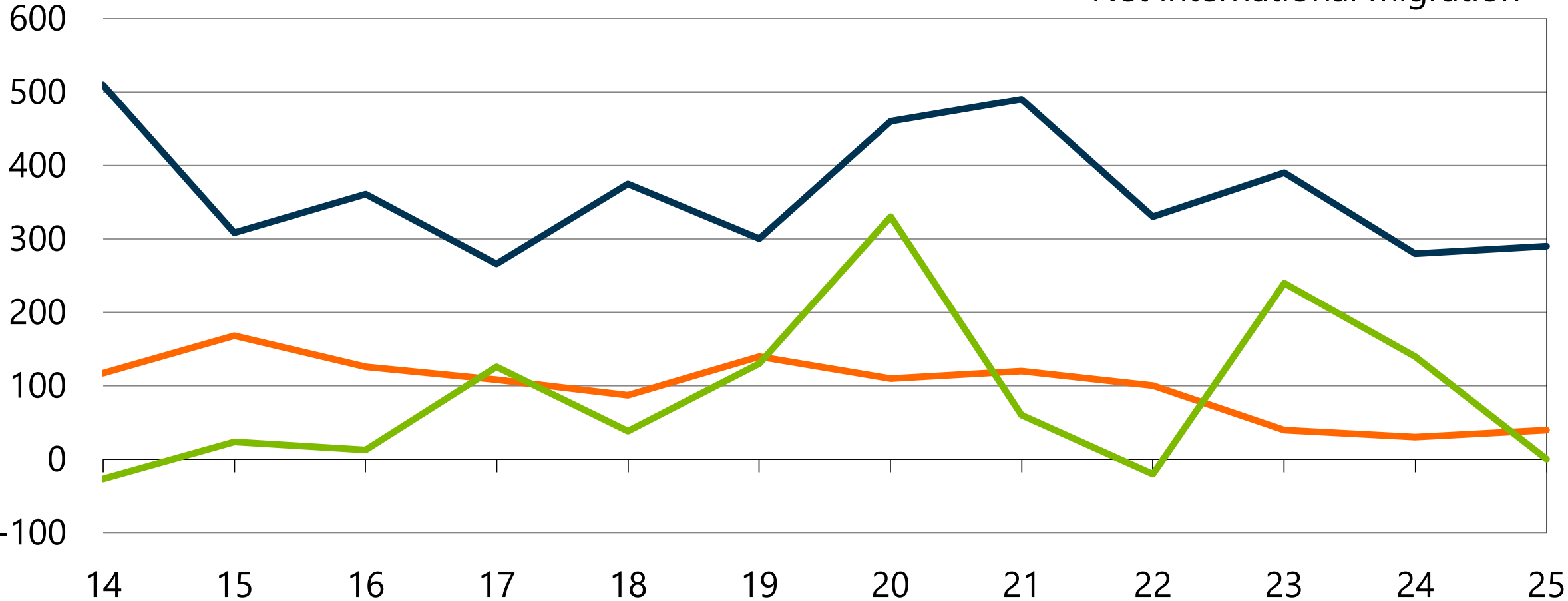


# District

# District population

## Manawatu District population drivers

Annual estimates

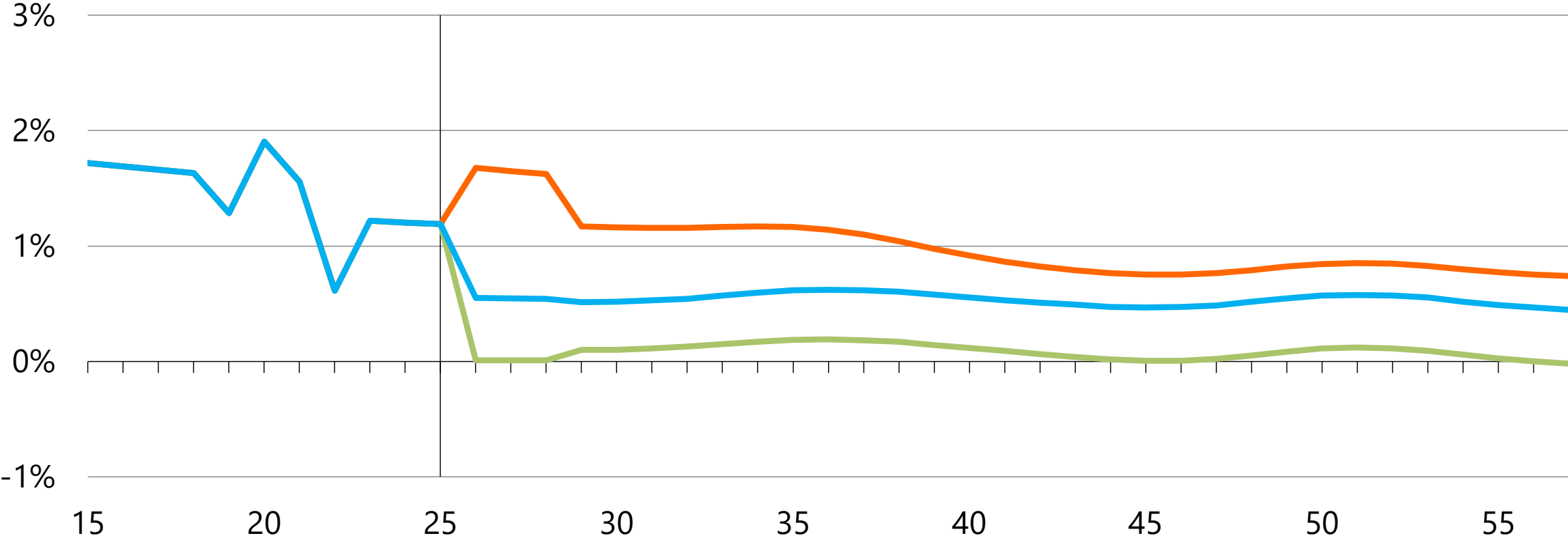


# District population

## Manawatu District population growth

Annual % change, Stats NZ estimates, Infometrics projection

- High
- Low
- Medium

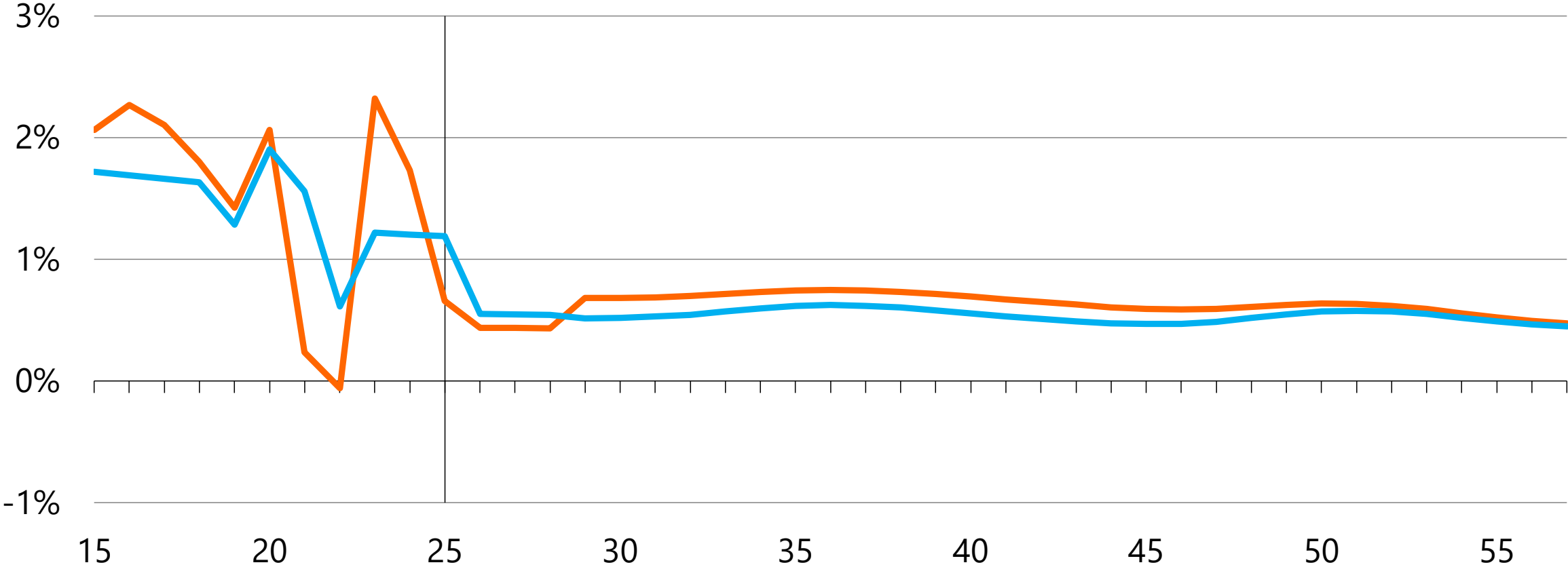


# District population

## Population growth

Annual % change, Stats NZ estimates, Infometrics medium projection

- New Zealand
- Manawatu District

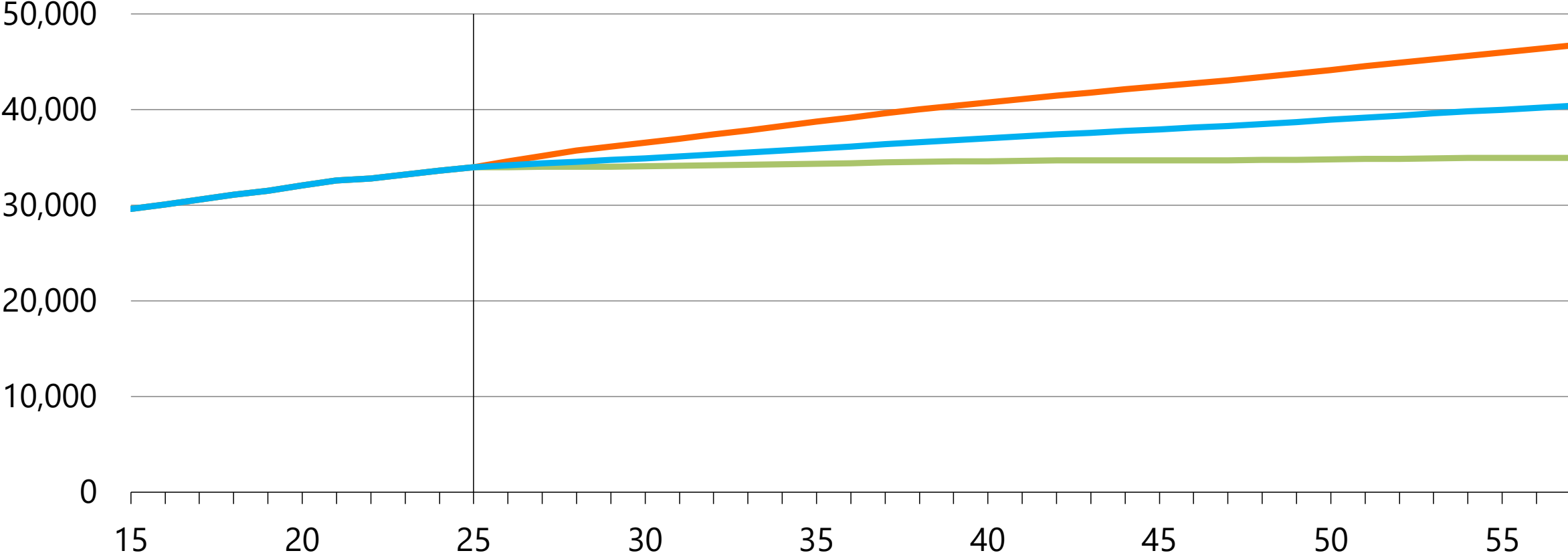


# District population

## Manawatu District population

Stats NZ estimates, Infometrics projection

- High
- Low
- Medium



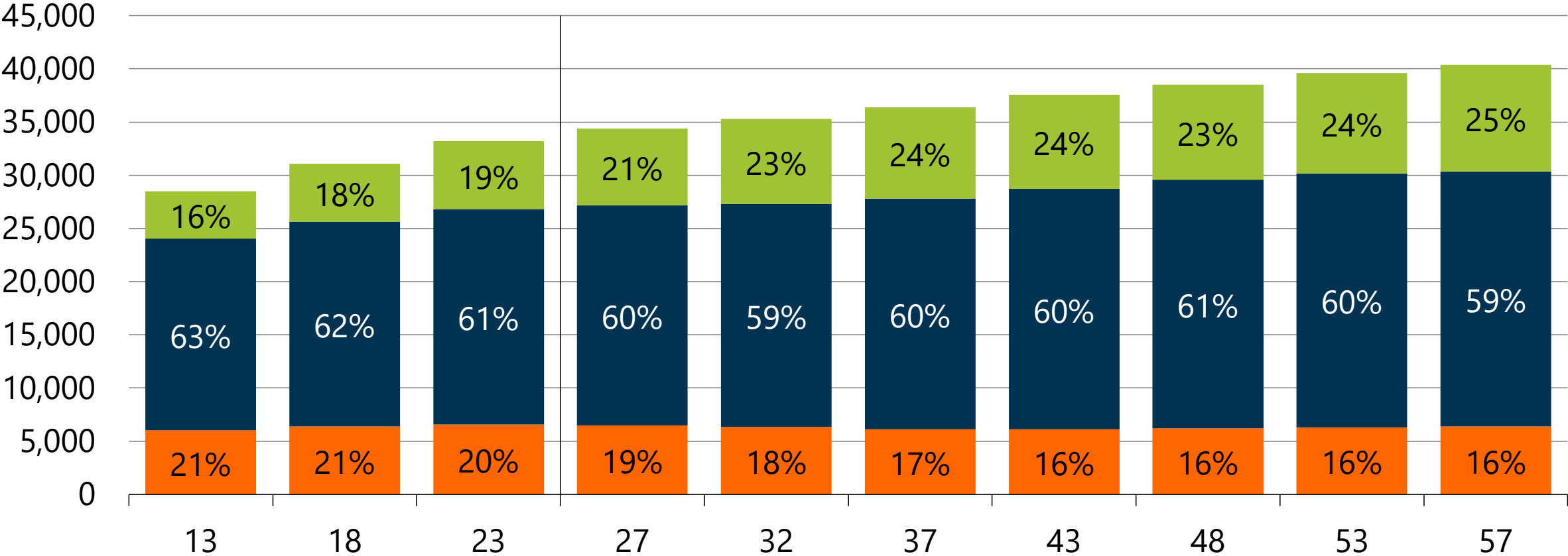
# District population

## Manawatu District population by age

Stats NZ estimates, Infometrics medium projection

*% of total population*

65+ 15-64 0-14

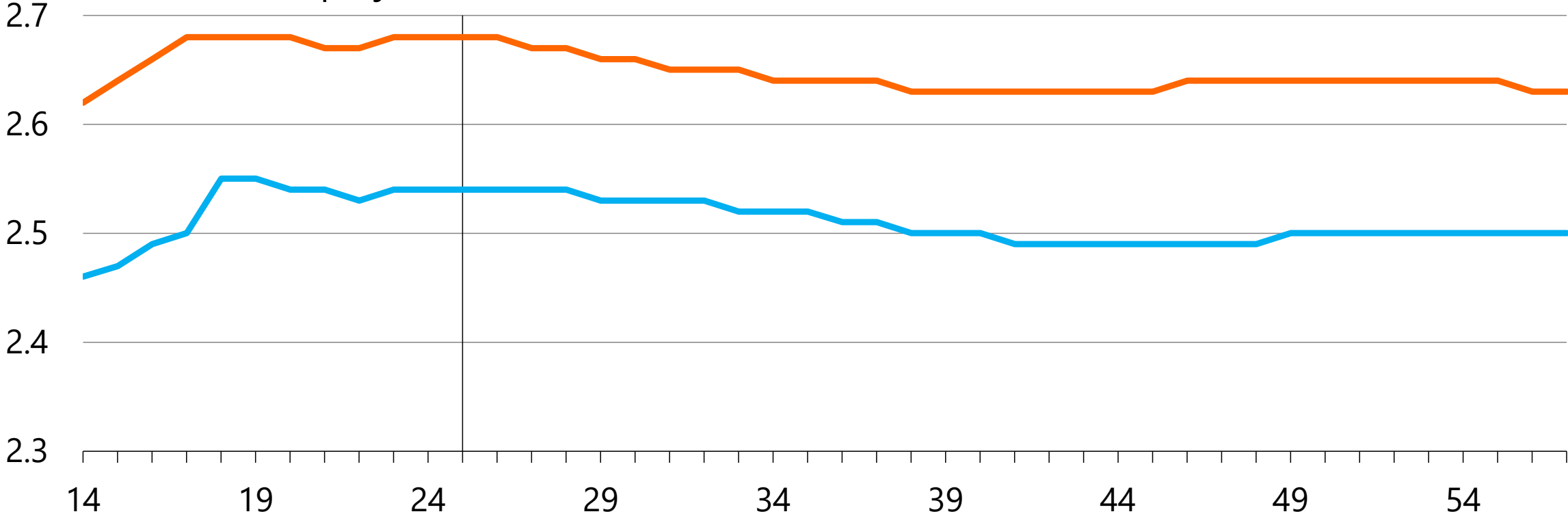


# Households

## Average household size

Infometrics medium projection

- New Zealand
- Manawatu District

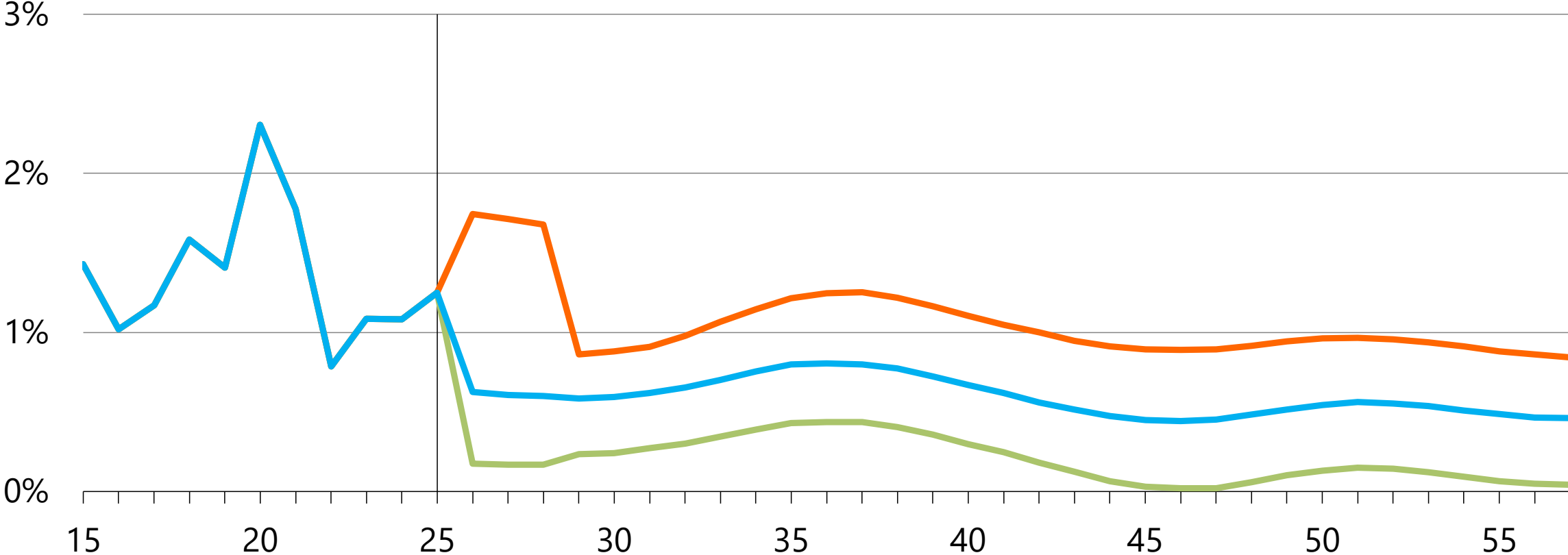


# Households

## Manawatu District household growth

Annual % change, Stats NZ estimates, Infometrics projection

- High
- Low
- Medium



# Sub-district

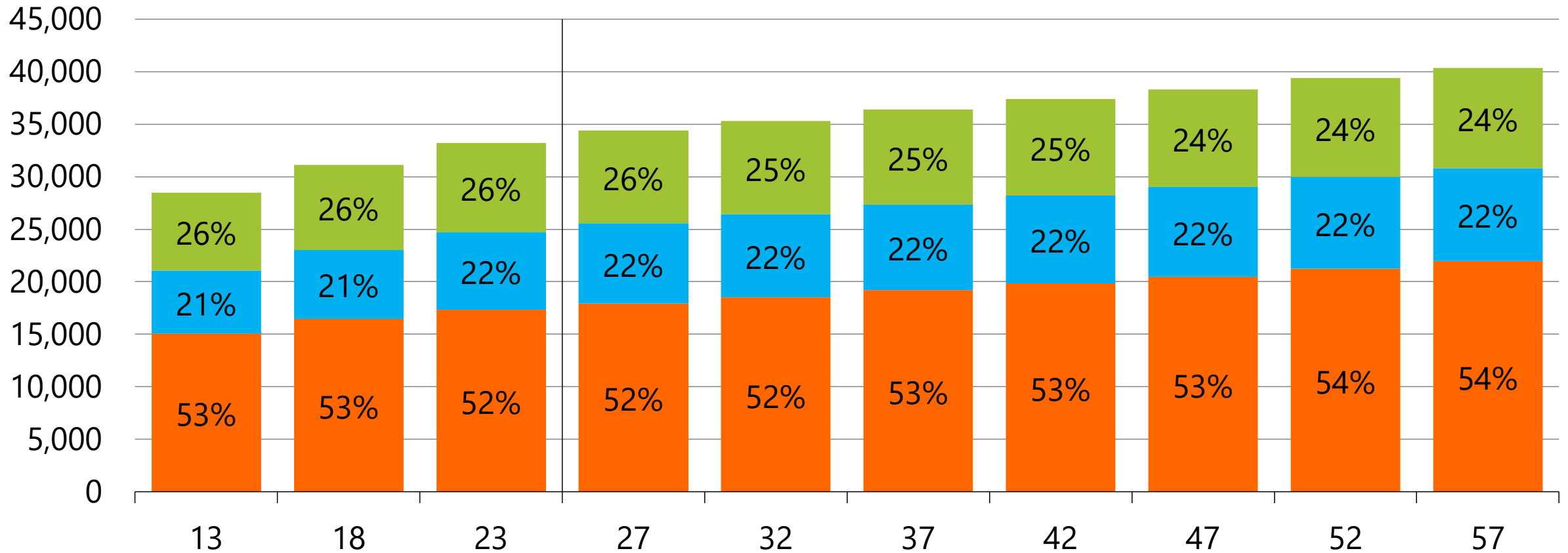
# Sub-district

## Manawatu District sub-district population

Stats NZ estimates, Infometrics medium projection

*% of total population*

- South
- North
- Feilding



# Questions?

**Nick Brunson (Principal Economist, Lead Demographer, & Director)**

Nick.Brunson@infometrics.co.nz